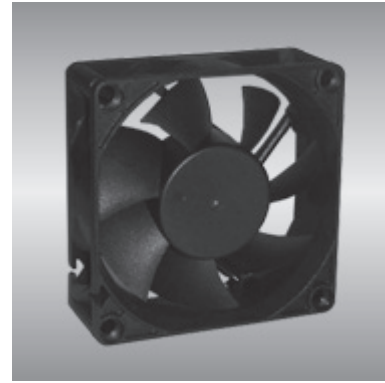


# 70 AG series

x70x25mm



## General Specifications

- Motor : 4 Poles brushless DC motor
- Frame & Impeller : Plastic(UL 94V-0)
- Storage temperature : -40° to +75°
- Operating temperature : -10° to +70°

## Major Characteristic Parameters

Model	*Bearing System	Rated Voltage	Operating Voltage Range	Rated Current	Rated Speed	Maximum Air Flow		Maximum Static Pressure		Sound Level	Weight
Part NO.	B / S / F	V	V	A	RPM	m <sup>3</sup> /min	CFM	mm-H <sub>2</sub> O	In-H <sub>2</sub> O	dBA	g
AGE07025_12L	B / S	12	7.0~13.2	0.07	3000	0.85	30.0	3.9	0.15	27.0	74
AGE07025_24L	B / S	24	14.0~26.4	0.05	3000	0.85	30.0	3.9	0.15	27.0	74
AGE07025_48L	B / S	48	28.0~56.0	0.04	3000	0.85	30.0	3.9	0.15	27.0	74
AGE07025_12M	B / S	12	7.0~13.2	0.09	3600	1.02	35.6	5.5	0.22	32.0	74
AGE07025_24M	B / S	24	14.0~26.4	0.06	3600	1.02	35.6	5.5	0.22	32.0	74
AGE07025_48M	B / S	48	28.0~56.0	0.05	3600	1.02	35.6	5.5	0.22	32.0	74
AGE07025_12H	B / S	12	7.0~13.2	0.13	4000	1.13	39.9	6.8	0.27	37.0	74
AGE07025_24H	B / S	24	14.0~26.4	0.08	4000	1.13	39.9	6.8	0.27	37.0	74
AGE07025_48H	B / S	48	28.0~56.0	0.07	4000	1.13	39.9	6.8	0.27	37.0	74
AGE07025_12U	B	12	7.0~13.2	0.16	5500	1.55	54.8	12.8	0.50	45.0	74
AGE07025_24U	B	24	14.0~26.4	0.35	5500	1.55	54.8	12.8	0.50	45.0	74

\*Bearing system B: Two Ball Bearing F: Fluid Bearing S: Sleeve Bearing

